



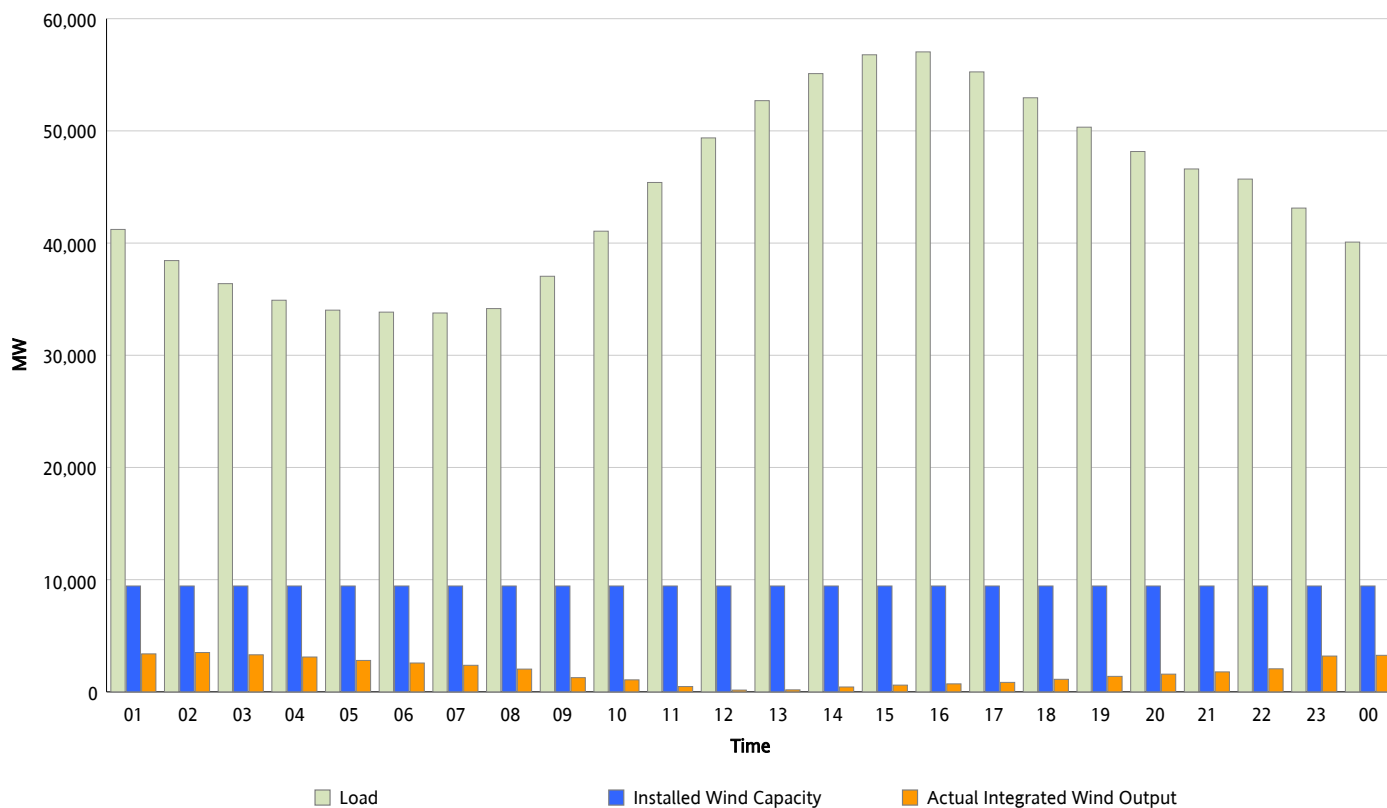
## ERCOT Grid Operations

### Wind Integration Report : 07/07/2012

Peak Load	57,040 MW
Load Peak Hour (HE)	16
Wind Over Peak	715 MW
Wind Record 06/19/12	8,368 MW
Max Wind Value*	3,621 MW
Wind Peak Time	01:14
Wind Integration %	9.27 %

#### Hourly Average Actual Load vs. Actual Wind Output

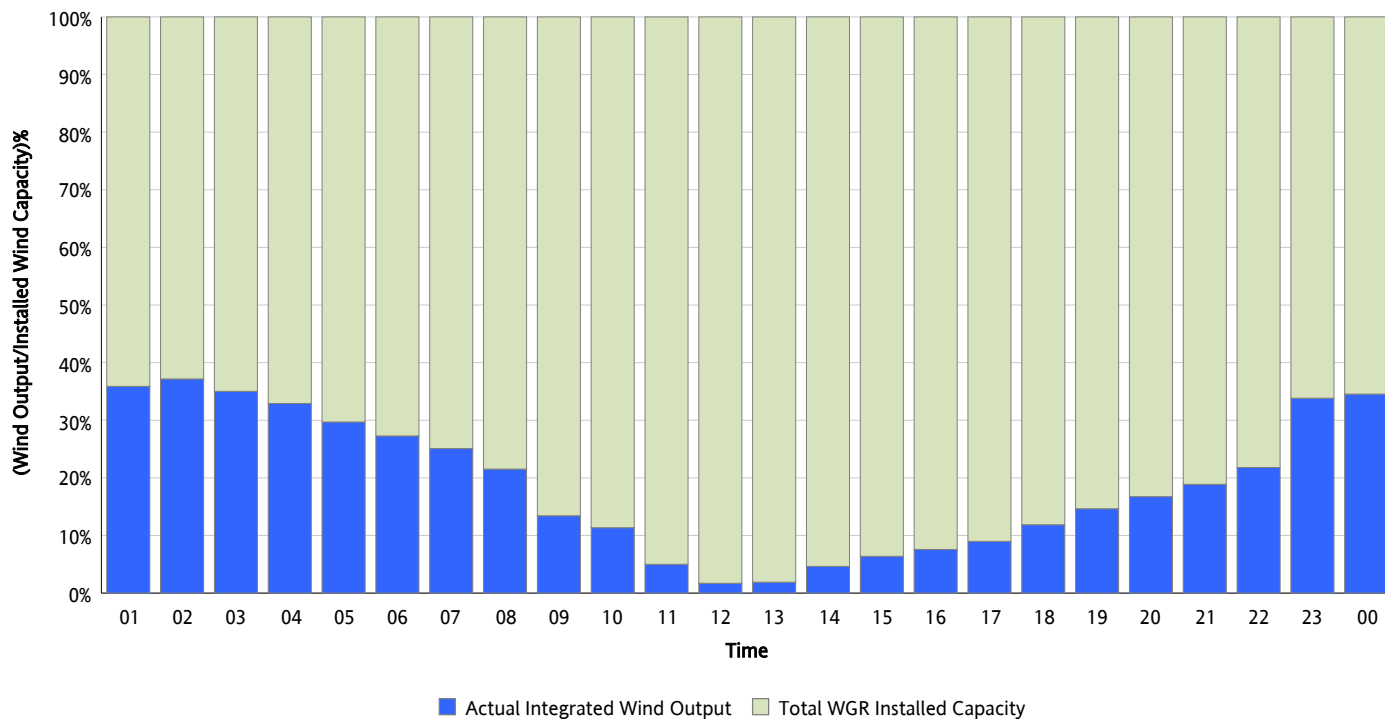
07/07/2012



\* Wind Record and Wind Max represent instantaneous values and the rest of the values are integrated over the hour

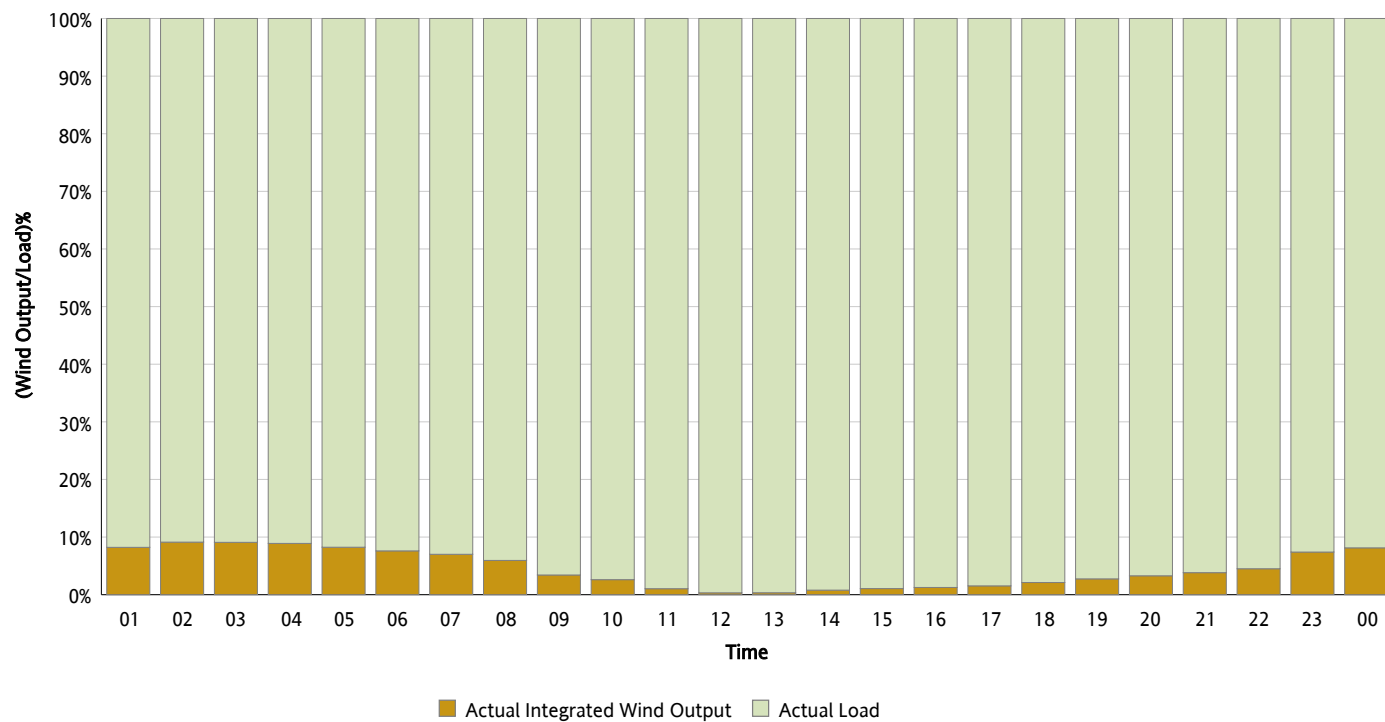
## Actual Wind Output as a Percentage of the Total Installed Wind Capacity

07/07/2012



## Actual Wind Output as a Percentage of the ERCOT Load

07/07/2012



## ERCOT Load vs. Actual Wind Output

06/30/2012 - 07/07/2012

